

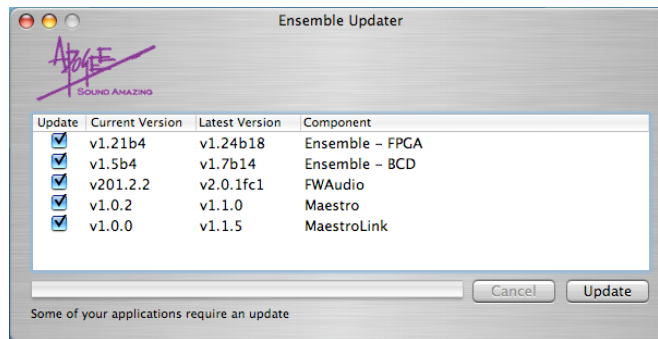
Ensemble 1.1.7 Software Release Notes

Ensemble Updater

Beginning with this software release, you can now update all of Ensemble’s software, firmware and driver components with one easy network app, Ensemble Updater. This app detects the versions of software, firmware and drivers in your Ensemble system, compares them with the latest versions on Apogee’s server, alerts you to components to be updated, and downloads and installs these components.

To use Ensemble Updater:

- 1) Connect Ensemble to your Mac; a previous version of Ensemble software must be already installed.
- 2) If possible, connect your Mac to the Internet; disconnect headphones and mute speakers connected to Ensemble.
- 3) Download the Ensemble Updater app and unzip the package.
- 4) Open Ensemble Updater; a window should appear that specifies the current and latest versions of Ensemble components. If a component’s **Current Version** is lower than the **Latest Version**, verify that the **Update** box is checked for that component.



- 5) Click on **Update** and follow on-screen instructions. You will need to power-cycle Ensemble and the Mac during the update procedure.
- 6) If your computer is not connected to the Internet (and you’ve installed Ensemble Updater via CD), the Updater will display the message “**Unable to connect to Apogee server**”. To update using the version 1.1.7 files embedded into the Update app, click on “**Update from local files**”. To load software release versions greater than 1.1.7, you’ll need to be connected to the Internet.
- 7) To downgrade components to previous versions, click on **Allow downgrades**, under the **Options** menu.

What's in Ensemble 1.1.7 Software Release?

Ensemble 1.1.7 Software Release consists of the following components:

Ensemble firmware	1.7_b14
MaestroLink	1.1.5
Maestro	1.1.0
Release Candidate 1 Firewire Audio	201.fc1

About Ensemble firmware 1.7_b14

This firmware version includes the following improvements:

- Eliminated clicks and pops when changing sample rates, clock source, connecting Ensemble to the Mac.
- Fixed minor SRC bugs.

About Maestro 1.1.0

This software version includes the following improvements:

- I/O Allocation feature added (please see the Ensemble User's Guide 1.1.2 for details).
- Firewire Bandwidth used feature added (please see the Ensemble User's Guide 1.1.2 for details).
- VBUS, Performance tuning features added (for Apogee Symphony PCI cards).

About Release Candidate 1 Firewire Audio 201fc1

This is a first Release Candidate of the Firewire Audio driver for Max OS X. It is designed to support Intel, G5 and G4 Macintosh systems.

This driver version has the following improvements:

- Supports all G5 and Intel Macs, G4 Macs 1GHz and greater.
- Supports the use of Firewire hard drives.
- Support of all sample rates 44k1-192kHz.
- Loss of audio after switching to 48kHz sample rate resolved.
- Latency performance improved.

The following configurations and features are NOT supported with Release Candidate 1 Firewire Audio 201fc1:

- Any firewire audio device other than the Apogee Ensemble.
- Multiple Ensemble setups.